

RUNNING THE DOLPHIN SYSTEM

The **CTS Dolphin** is a wireless stopwatch time system available for 6 to 10 lanes with up to three watches per lane. The CTS Dolphin hardware interfaces directly in MEET MANAGER and operates in either **Stand Alone Mode** or **Backup Mode**. RMA uses the Stand Alone Mode.

Stand Alone Mode

In this mode, Meet Manager treats the Dolphin system as the primary times using stop watches. But instead of collecting Lane/Timer Sheets or Entry Cards and keying the watch times into Meet Manager, you simply press one key for the run menu and Meet Manager imports all the lane watch times directly into your Meet Manager database for you to review, edit and/or accept.

CTS Dolphin Software Set-up

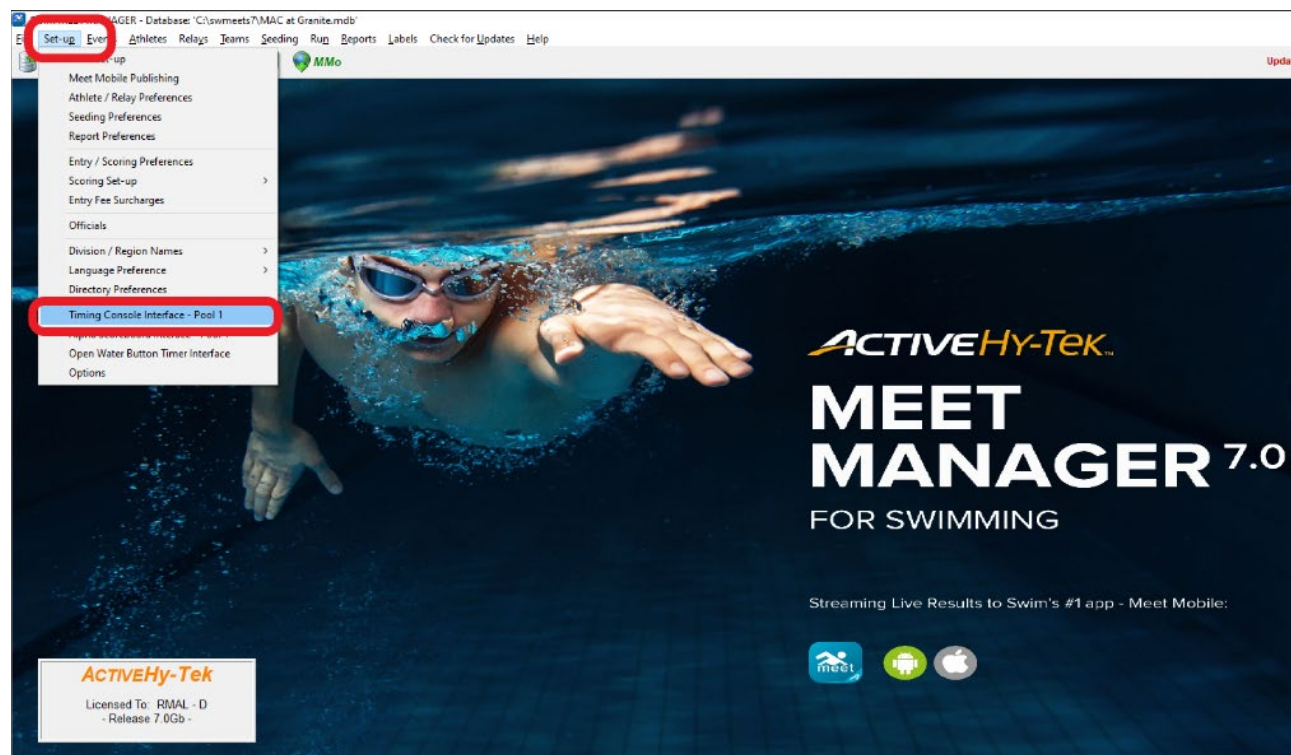
You must install the Dolphin software using the CD provided by Colorado Time Systems. This CD will install the program onto your hard drive and install a USB driver. You may also receive a download link from RMAL to install the Dolphin software.

Hardware Requirements

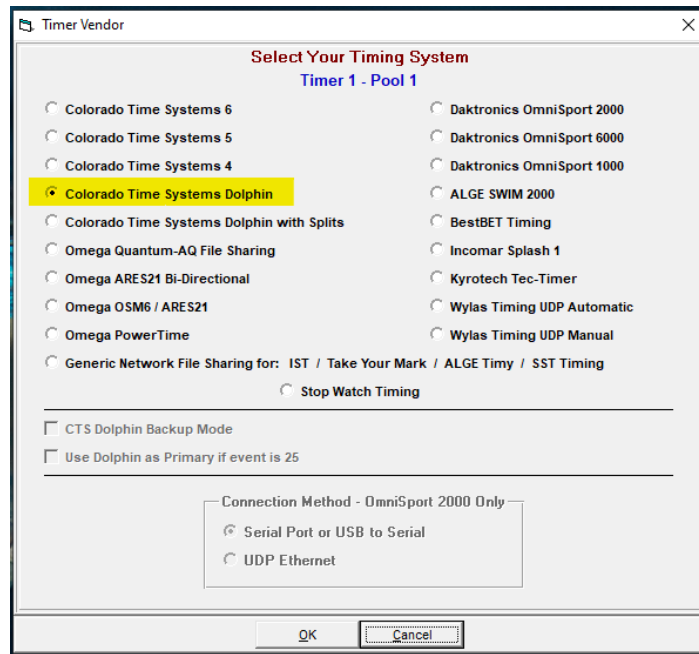
The Dolphin system has a wireless base unit which connects to the Hy-Tek computer through a USB port. With the Hy-Tek computer turned on and with the Dolphin software already installed, plug in the Dolphin base unit's USB cable.

Meet Manager Setup for Stand Alone Dolphin System

Click on Set-Up from the Main Menu Bar and then choose Timing Console Interface - Pool 1:

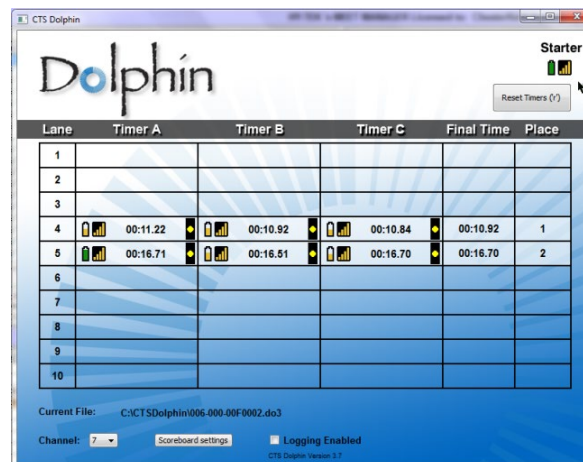
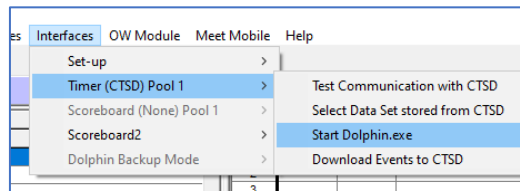


Now click on the Colorado Time Systems Dolphin radio button and then OK.



Operation

Connect the wireless base unit's USB cable to your laptop. On each wireless watch and the wireless starter unit, press and hold the Reset button to turn them on. If the system is operating correctly, the Dolphin software should have a green light on each lane that has a wireless watch assigned to it. Minimize the Dolphin software. Start Meet Manager. If Meet Manager was already running, you can start the Dolphin software from within Meet Manager by going to **Run / Interfaces / Timer(CTSD) Pool 1 / Start Dolphin.exe**:



Timing a Race

When the Colorado starter sounds to start the swimmers, the Dolphin wireless watches start timing automatically. This starts all the wireless watches. The timers only need to stop their watch when the swimmer hits the finish. When all watches have been stopped, the wireless starter unit should be stopped. As soon as the wireless start unit's reset button is pushed by the starter, the Dolphin software writes a result file for that race to the "c:\CTSDolphin" folder on the computer and the next race can be started. From the Run Menu in Meet Manager, click on **Get Times (or press F3)** and a list of Dolphin results files for the current **Data Set** will be displayed with the most recent file at the top.

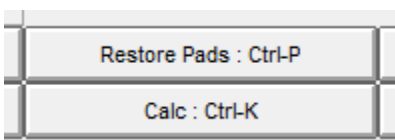


Select the correct result file and Meet Manager will read the data into the proper lanes, putting the times into the backup columns for the heat. If the backup columns are hidden in the Run menu, press Ctrl-B.

- If there is one watch for a given lane, that time will be placed in the Finals Time column.
- If there are 3 watch times for a given lane, the middle time will be placed in the Finals Time column.

	Seed Time	Finals Time	DQ	Exh	DQcode	Backup 1	Backup 2	Backup 3
Club	2:14.78	46.62	<input type="checkbox"/>	<input type="checkbox"/>		46.64	46.61	
Club	1:53.74	46.61	<input type="checkbox"/>	<input type="checkbox"/>		46.63	46.59	
Club	1:47.05	46.50	<input type="checkbox"/>	<input type="checkbox"/>		46.52	46.49	
	NT	45.45	<input type="checkbox"/>	<input type="checkbox"/>		45.45	45.45	

- If there are two watches for a given lane, the average will be computed and will be placed in the Finals Time column. The average is computed based on the rule choice selected in in Meet Manager located at: **Run / Preferences /Backup Times**. Please note that if there is 0.3 or more seconds difference between the two watch times, the average result time will NOT be computed and a yellow line will show for this lane. This means you must decide whether to throw out one of the watch times if you determine one of them is way off. Once you are OK with the watch times, select the Calc button or press Ctrl + K.



This will display the watch averaging menu and the system will compute the average. If you are satisfied with the calculations, select the **Accept Adjusted** button from the window and the system will place the times into the Finals Time columns. If one of the times is no good, delete it, select the Calc button (Ctrl + K) again to allow for the calculation to take place or simply type in the time for the more accurate watch time for that swimmers Finals Time.

Use	Lane	Primary	Button 1	Button 2	Button 3	Button Calc	Difference	Adjusted	Ad
<input checked="" type="checkbox"/>	1	46.62	46.64	46.61		46.62	0.00	46.62	
<input checked="" type="checkbox"/>	2	46.61	46.63	46.59		46.61	0.00	46.61	
<input checked="" type="checkbox"/>	3	46.50	46.52	46.49		46.50	0.00	46.50	
<input checked="" type="checkbox"/>	4	45.45	45.45	45.45		45.45	0.00	45.45	
<input type="checkbox"/>	5								
<input type="checkbox"/>	6								

If there is more than .30 seconds between the middle backup time and the primary time, use the backup time without
 Yellow = Calculated backup time is more than .30 faster than the pad time.
 Blue = Calculated backup time is more than .30 slower than the pad time.
 Green = Only two backups: the average is more than .30 from the pad time, but one backup is within .30 of the pad ti
 Dark Pink for any backup time means it is more than .30 from the pad time.

Preference is set to NOT use Pad and Backup Differentials to adjust times.

Accept Adjusted Reject Adjusted

If you are keeping track of races by Race Number, you can select the Race # button instead of the Get Times button. This button increments itself by 1 automatically and searches the data set of results for a matching race number. This is the quickest way to get results if you are keeping up with the race numbers.

Race # : F2

Get Times : F3

HY-TEK's MEET MANAGER for Windows

Enter Race Number

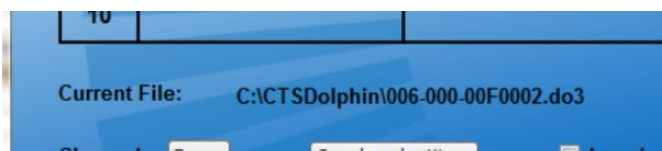
Race Number : 23

OK Cancel

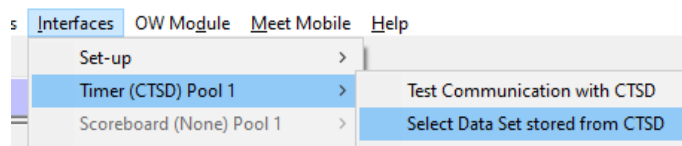
Refer to the Dolphin Users Guide for more detailed instructions on how to use the Dolphin system.

How to Select a Data Set for your Meet (happens infrequently)

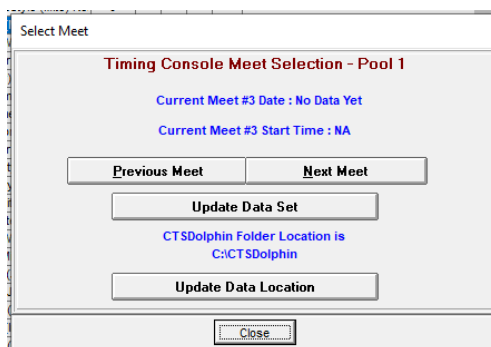
A Data Set is a set of results for a given meet or session of a meet. Each time a race is completed, the Dolphin system creates a result file in c:\CTSDolphin with the file extension .do3. The file name can also be seen at the bottom of the CTS Dolphin window, called Current File:



The first 3 characters of the file name are numbers from 001 to 999. This three-character number defines the Data Set number. When you select a data set, you are selecting the results based on the first three characters of the result file. The last 4 characters of each result file has a number from 0001 to 9999 which is the Race Number. Each file within a data set has a unique race number. Each time the Dolphin software is started, it starts a new data set by scanning the files in c:\CTSDolphin to figure out what the highest data set number is and resets the race number back to 0001. To select a Data Set, click on **Run / Interfaces / Timer (CTSD) Pool 1** and click on Select Data Set stored from CTSD.



The INTERFACE will display a window with the date and time and the number of races that have been stored for the current data set the Meet Manager is pointing to. Remember, you could be running a three-day meet and the INTERFACE must know what “data set of meet data” you want to access.



Click on the Previous Meet or Next Meet button to select the appropriate data set. Because there is a date and time shown for when the first file in the data set was created, you can usually figure out which data set to select. If new Data Sets with a new data set number have been added since starting Meet Manager, you can click **Update Data Set** and all data sets will be refreshed for your selection. Once you have found the correct Data Set you can begin pulling times into Meet Manager using the Get Times Tab.

Verify that these times match up with the first event and you should be able to draw all the times in race number sequential order for the remainder of the meet.